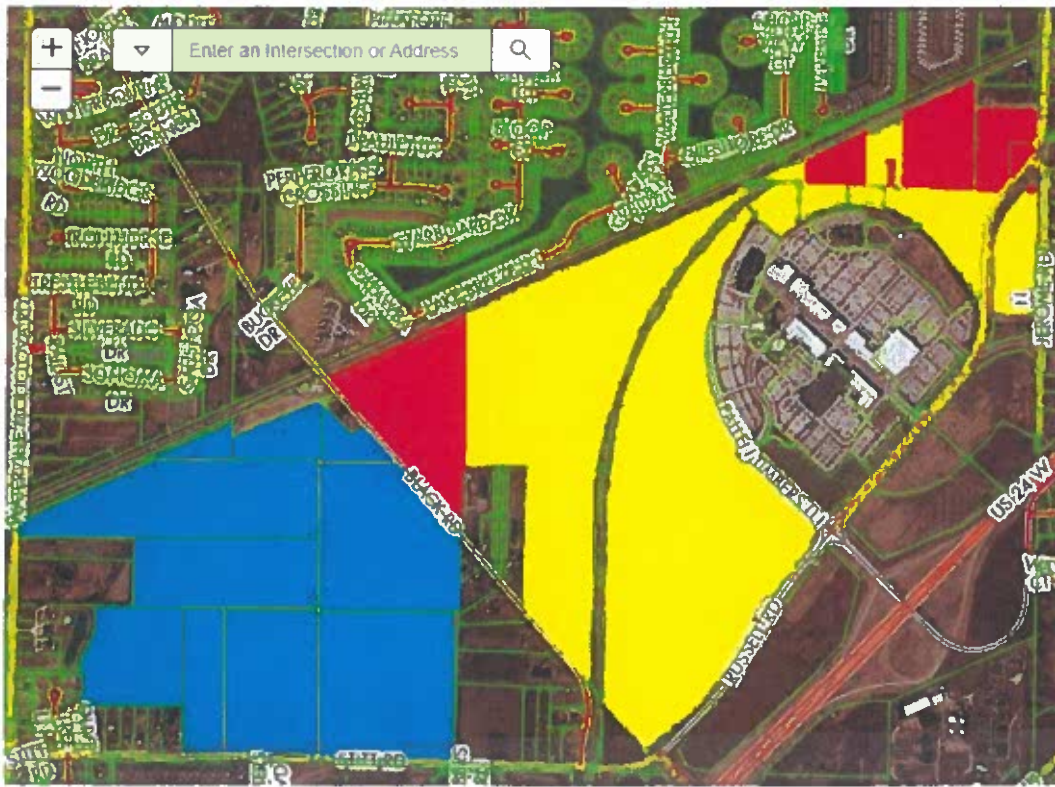


Map referenced
in 12.01.25
trustees meeting



Key –

Yellow – City of Maumee

Red – Formerly Monclova Township, now annexed into the City of Maumee

Blue – Monclova Township

Annexation History

- The West-Most parcel in red applied for residential zoning with Monclova township.
- The township approved residential zoning with less density than what the developer desired.
- The developer then applied for annexation into Maumee
 - There are 7 requirements that if met allow for automatic annexation.
 - The township fought in court and loss – the property was allowed to be annexed
- Maumee approved zoning with the higher density.
- The 6 East-Most parcels in red did not apply for zoning in Monclova.
- The same developer instead just annexed the properties into Maumee
- Maumee approved apartments in that area
- Apartments were not in the land use plan area for Monclova